

# **-b-foam<sup>®</sup>**

**GEOFOAM-GRADE<sup>®</sup>**

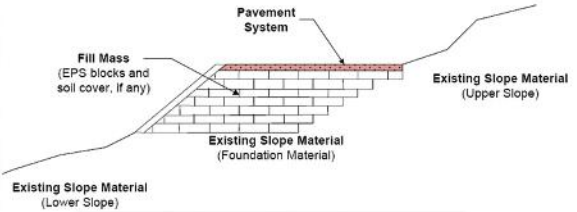
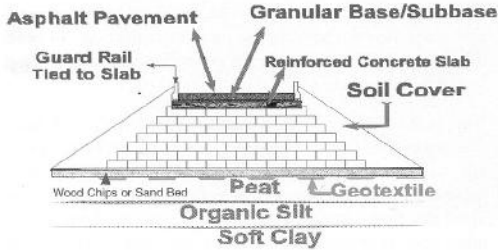
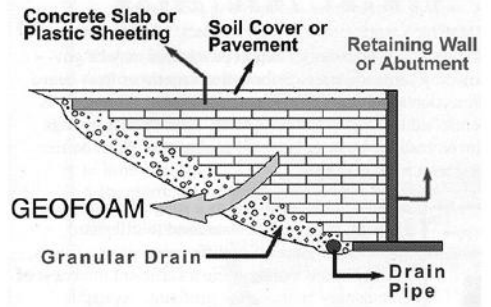
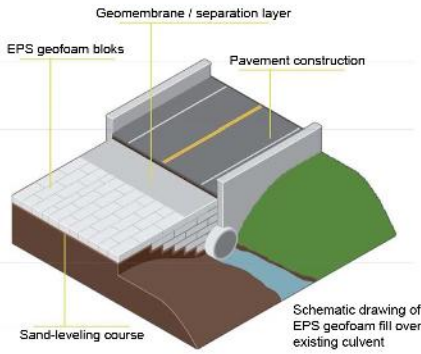
Retaining Walls | Road Construction/Widening | Overpass Abutments/Ramps  
Landscaping | Tribune Seats | Raised Floors



Raised Floor Ice Skating AEON  
Cakung - Jakarta

- ✓ **Ultralight** (specific mass is 1/50 or just 2% of soil) - thus significantly reduces soil settlement and slope failures
- ✓ **Very high compressive strength to weight ratio** - thus can be used for heavy load application
- ✓ **Super-long service life** - does not decay (non-biodegradable) and does not oxidize in air, water, and most other natural elements
- ✓ **Save time (save cost)** - super-light, pre-cut EPS blocks reduce logistical challenges
- ✓ **Precise dimension** - ensure ease of installation, does not depend on weather as much

[www.b-foam.com/geofoam](http://www.b-foam.com/geofoam)



youtu.be/pJoMdZp6obs

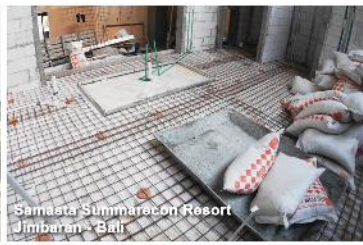
[www.b-foam.com/geofoam](http://www.b-foam.com/geofoam)



Raised Floor  
NPCT 1 Office - TJ Priok, Jakarta



Raised Planter Floor  
Somerset Apartments - Jakarta



Samata Summarecon Resort  
Jimbaran - Bali



Raised Floor  
Tarakan Hospital - Jakarta



Pacific Century Tower  
SCBD - Jakarta



Lightweight Fill Wayang Windu  
Star Energy Geothermal



Lightweight Fill, Retaining Wall  
Budi Asih Residence - Bandung



Raised Floor  
Lexington Apartments - Jakarta



Tribune Seats Sport Jabar  
Arcamanik - Bandung



Raised Floor  
IFC Building Sudirman - Jakarta



Insulated Ice Slide  
Paris Van Java Mall - Bandung



Bridge Abutment  
Cikampek - Palliman Tol Road



Raised Floor  
Golden Tulip Hotel - Pontianak



Lightweight Backfill  
Patuha - Takenaka Dobuku Construction



Tribune Seats  
Bandung Alliance Intercultural School  
Kota Baru Parahyangan - Bandung



Foundation  
Universitas Pertahanan (UNHAN) - Sentul



Retaining Wall  
Citra Green Dago - Bandung



Raised Floor  
Uber Indonesia Office - Jakarta

## Technical Specifications

- Fire Retardant (FR), b-foam® Geofoam-Grade® EPS (Expanded Polystyrene)
- Available types: GG 12, 15, 19, 22, and 29 (up to cut JIS standard 75 kPa @ 1% strain)
- Adheres to ASTM D6817-07 (US standard)

Type	GG12	GG15	GG19	GG22	GG29
Density, min. Kg/m3(lb/ft3)	11.2 (0.70)	14.4 (0.90)	18.4 (1.15)	21.6 (1.35)	28.8 (1.80)
Compressive Resistance, min. kPa (psi) at 1%	15 (2.2)	25 (3.6)	40 (5.8)	50 (7.3)	75 (10.9)
Compressive Resistance, min. kPa (psi) at 5%	35 (5.1)	55 (8.0)	90 (13.1)	115 (16.7)	170 (24.7)
Compressive Resistance, min. kPa (psi) at 10%	40 (5.8)	70 (10.2)	110 (16.0)	135 (19.6)	200 (29.0)
Flexural Strength, min. kPa (psi)	69 (10.0)	172 (25.0)	207 (30.0)	276 (40.0)	345 (50.0)
CBR values* (%)	3.1	3.8	4.6	5.3	6.8

\*Syracuse University EPS Geofoam Design Parameters Research (Huang and Negussey)

## PT BETON ELEMENINDO PUTRA

### Factory, Headquarters & Showroom

Jl Raya Batujajar KM 5 No 8  
Desa Giri Asih, Cangkorah  
Kab. Bandung Barat  
West Java - Indonesia 40561



2013 Indonesia Winner - Best SME

### Jakarta Office

Jl Meruya Ilir Kompleks Intercon Plaza  
Blok F/5 Taman Kebon Jeruk  
West Jakarta - Indonesia 1560



Merit Winner - Regional (ASEAN) Category  
2012 Singapore Environmental Achievement Award

+6222 686 7077 (Head Office)  
+6221 2254 1560 (Jakarta Office)

+622 686 7076

marketing@b-foam.com

@bfoambpanel

YouTube betonputra

# BETON WORKS

